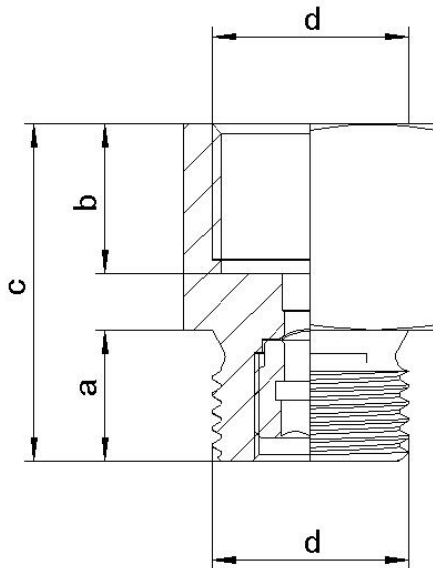


# Hybrid System® G Connect



d	a	b	c	AF	DN	suitable for pressures
G 1/8"	8 mm	10 mm	20,0 mm	13	min. 2,0 mm	40 - 1000 bar
G 1/4"	12 mm	14 mm	29,5 mm	17	4,0 mm	30 - 1000 bar
G 3/8"	12 mm	13 mm	31,0 mm	22	5,5 mm	10 - 1000 bar
G 1/2"	14 mm	16 mm	36,0 mm	27	5,5 mm	10 - 1000 bar
G 3/4"	16 mm	20 mm	42,0 mm	32	12,7 mm	3 - 500 bar
G 1"	16 mm	20 mm	40,0 mm	41	12,7 mm	3 - 500 bar

**Sealing:** O-ring, USIT-ring or metal seal (Cu, Al)

**Body:** stainless steel 1.4404  
**Marking:** by laser

**Bursting element options:** - nickel  
- stainless steel  
- Inconel  
(depending on requirements and availability)